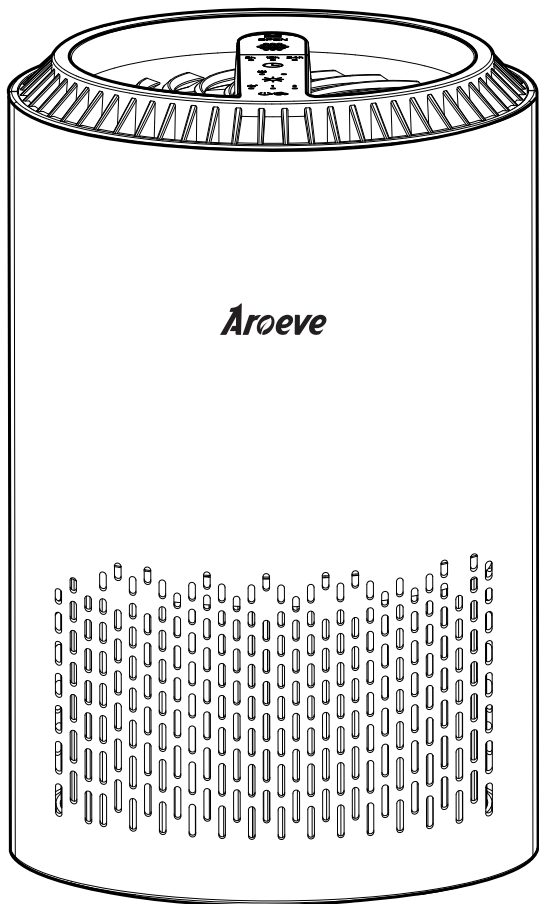


Aroeve

Model: MK01

Air Purifier

User Manual



Customer Service: support@aroeve.com

PLEASE READ AND SAVE THESE IMPORTANT SAFETY INSTRUCTIONS

US

PRODUCT STRUCTURE

6h 12h 24h ● ——— Timer Indicator Lights



● ———  Timer Button



● ——— * LED Light | * Mood light



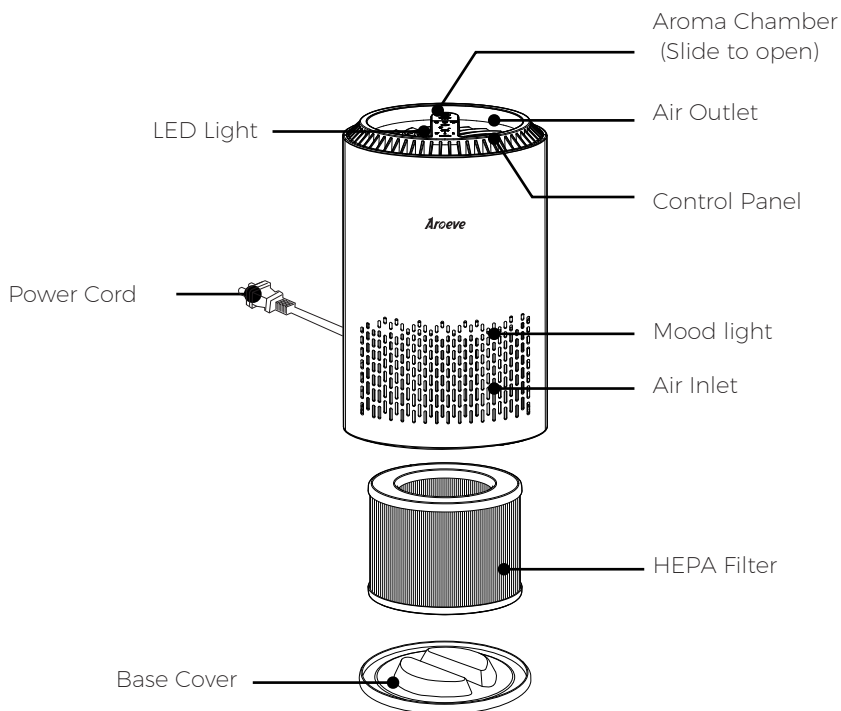
● ———  Light / Reset Button



● ——— Modes Indicator Lights



● ———  ON/OFF & Modes Button







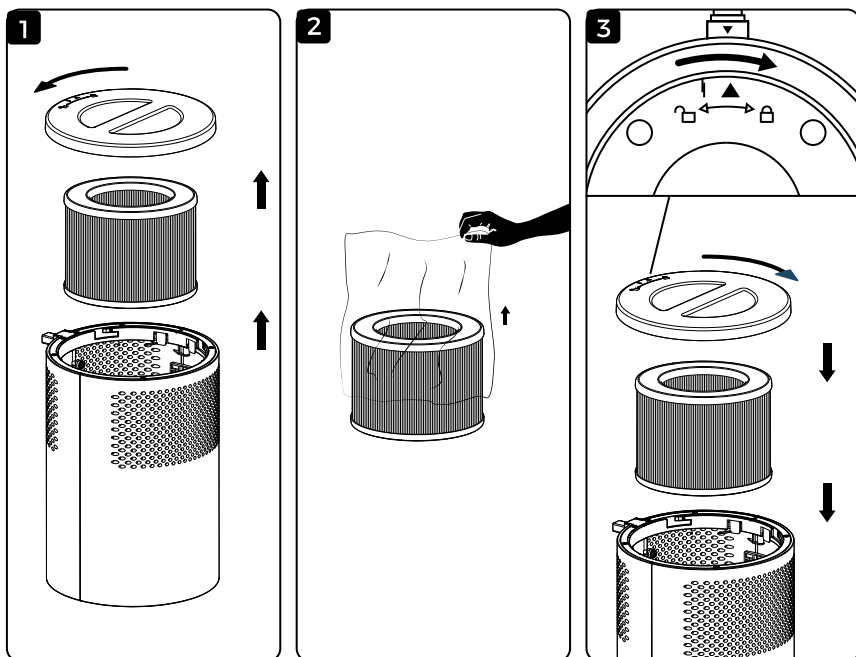
SPECIFICATION

Model:MK01	Rated Power : 17W
Rated Voltage : 120V-	Rated Frequency : 60Hz

BEFORE FIRST USE

The appliance comes with a filter fitted inside, do remember to remove the packaging of the filters before use.

1. Contrarotate the base cover to unlock it ( ← ).
2. Take filter out and unpack it
3. Fit it back into the appliance.
4. Turn the base cover clockwise from OPEN to LOCK ( → ) position, you will hear a "click" sound when it is fastened.



OPERATING INSTRUCTIONS

1. ON/OFF & Modes Button

Tap "☺/☹" to turn on the purifier. Default at Level 1, with the indicator light on. The LED light will turn on. Press 2nd time to switch to Level 2, indicator light changes to '2'. Press 3rd time to switch Sleep Mode, indicator light changes to "☾". Press 4th time to turn off the purifier. All lights off.

2. Light/ Reset Button

Tap "☀/☸" to control the LED light and Moon light. The LED light and Moon light can freely switch or be turned both off.

Note: When the filter is being used for 2000 hours, the built-in sensor will alert with a red indicator light turning on: It's time to change the filter.

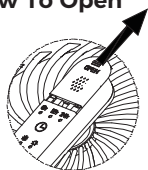
After replacing the filter element, long press "☀/☸" button 2s, the buzzer rang twice, and the lamplight at the top resumes blue, filter successfully opens a new timing reset.

3. Timer Button

Press "🕒" to set the timer from 6H-12H-24H-OFF. When the time is up, the machine will turn off automatically.

AROMA DIFFUSE

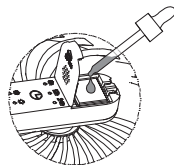
How To Open



1. Press the cover and slip out



2. Turn over the cover



3. Add a few drops of the essential oils and close the chamber.

Notes:

1. Shut off the machine before adding the essential oils.
2. Only use the droppers that come with the essential oils, do not pour in directly.
3. Add 4-5 drops each time.

SAFETY INSTRUCTIONS

Important:

Please read and comply with all of the instructions and warnings provided in this manual before using the product. Failure to comply with the instructions and warnings provided herein may result in inaccurate results or damage to the product itself.

- 1.Ensure the plug fits properly into a polarized power outlet.
- 2.This appliance should only be used in room with temperatures between 40°F and 110°F.
- 3.To avoid fire or shock hazard, connect the purifier into correct electrical outlet.
- 4.NEVER place on a soft surface such as a bed or sofa as this could cause the unit to tip over and block the air inlet or outlet grills.
- 5.Do not place anything on top of unit.
- 6.Do not move or tilt the unit while it is in operation.
- 7.Do not insert fingers or objects into the air outlet.
- 8.Do not use outdoors.This unit is only suitable for indoor use, please avoid strong sunlight and rain.
- 9.Do not use near water to against electrical hazards.
- 10.Do not use the unit in wet or humid environments.
- 11.Do not handle the unit with wet hands.Thoroughly dry your hands before handling any part of the air purifier.
- 12.Do not place the unit directly below an air conditioner to prevent any moisture from getting in to the purifier.
- 13.Do not allow children,pet to play on or near the unit. Close supervision is necessary when any appliance is used by or near children, or disabled persons.
- 14.Keep unit away from heated surfaces and naked flames such as stove tops,ovens,radiators or computers.
- 15.Always turn the purifier off before unplugging it.
- 16.Always unplug the air purifier before moving or cleaning the unit, opening the gill, changing the filter and whenever the unit is not in use.
- 17.To disconnect the unit, be sure to pull the plug and not the cord.
- 18.NEVER use detergents,gasoline,glass purifier,furniture polish,paint thinner,or other household solvents to dean any part of the purifier.
- 19.Non-professional personnel or unauthorized repair personnel shall not repair or transform the machine by themselves.
- 20.Do not operate the appliance with a damaged cord or plug. If the motor fan fails to operate or the unit has been dropped or damaged in any manner, contact the customer service.
- 21.Always allow 15 inches of clearance on all sides of the purifier.
22. This appliance has a polarized plug (one blade is wider than the other). To reduce the risk of electric shock, this plug is intended to fit in a polarized outlet only one way. If the plug does not fit fully in the outlet, reverse the plug. If it still does not fit, contact a qualified electrician. Do not attempt to defeat this safety feature.
23. To Reduce The Risk Of Fire Or Electric Shock, Do Not Use This Fan With Any Solid-State Speed Control Device.

WARRANTY

We appreciate your feedback and will do our best guarantee your satisfaction.

Within 2 year after your purchase,shall the product has defects, we will provide a refund or resend you a new one. Please email email us with your concern and order number. Your inquiries will be taken care of as soon as possible.

This warranty only cover orders from authorized brand online stores and our official website. We are not responsible for any purchases from other distribution channels.

Contact Customer Support Team:

Email: support@arovee.com

Guangdong Shunde DOUHE Electronics Technology Co.,Ltd
203 Room,Second Phase West Block,Guangdong Industrial Design
City,Beijiao,Shunde district,Foshan City, Guangdong Province,China