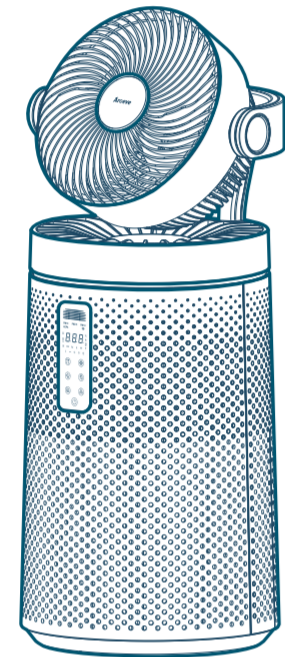


210mm

1

Aroeeve



WIFI & DATE & BLUETOOTH CONNECTION TIPS:

1. The first connection, only with wifi connection, not with Bluetooth or a data connection.
2. After connecting, disconnect wifi, you can use data alone or Bluetooth alone to automatically connect to control the machine.
3. Bluetooth is beyond the connection range can not control the machine, data alone and wifi can control the machine from a distance.
4. Bluetooth alone state control machine, away from the control range can not control the machine, back to the control range, it takes about a few dozen seconds to connect again and then Bluetooth can control the machine again.
5. After disconnecting the power, re-plug the power, Bluetooth alone, data alone, and wifi alone can be reconnected to control the machine, but Bluetooth takes a few seconds to reconnect. (you can also exit the page to re-enter to connect faster.)

Email Us: support@aroeve.com
Quick & professional reply in 24 hours

SMART PURIFYING FAN
Product Model:MK08W

148mm

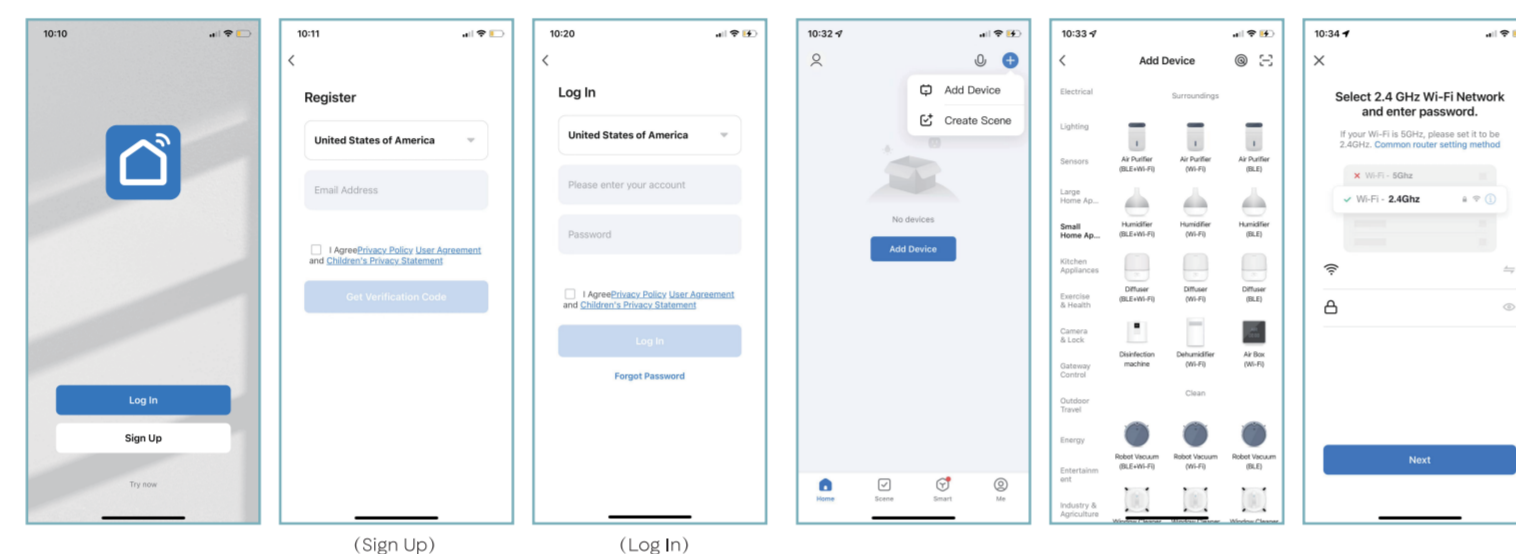
2



1. Download Smart Life APP
To confirm that the product is powered on, please follow the operation instructions, and long press "Ⓜ" to enable Wi-Fi matching and ensure that the Wi-Fi indicator blinks (Choose the Blink Slowly)
2. Open the Smart Life Smart app. Log In or Sign Up.
3. Ensure that the phone is connected to Wi-Fi, open the APP interface, and enable the Wi-Fi pairing function of the product at the same time (please refer to page 6 for product Wi-Fi pairing). Follow the following steps for product pairing.

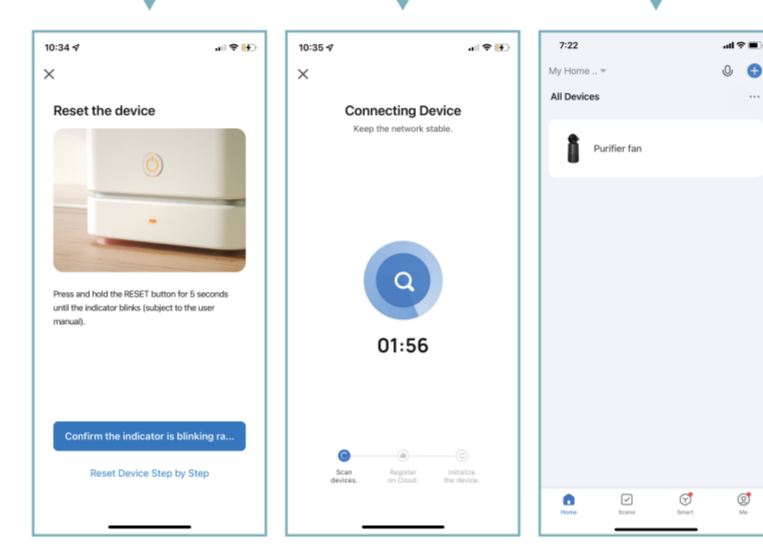
APP SETUP QUICK START

- Step 1: Click "+ to Add Device"
- Step 2: Manual Add Device, click "Air Purifier/Wi-Fi"
- Step 3: Enter your Wi-Fi password and click "Next"



3

- Step 4: To confirm that the product is powered on, please follow the operation instructions, and long press "Ⓜ" to enable Wi-Fi matching and ensure that the Wi-Fi indicator blinks (Choose the Blink Slowly)
- Step 5: Open the search product, enter the matching moment
- Step 6: The pairing is successful, and the smart APP is enabled



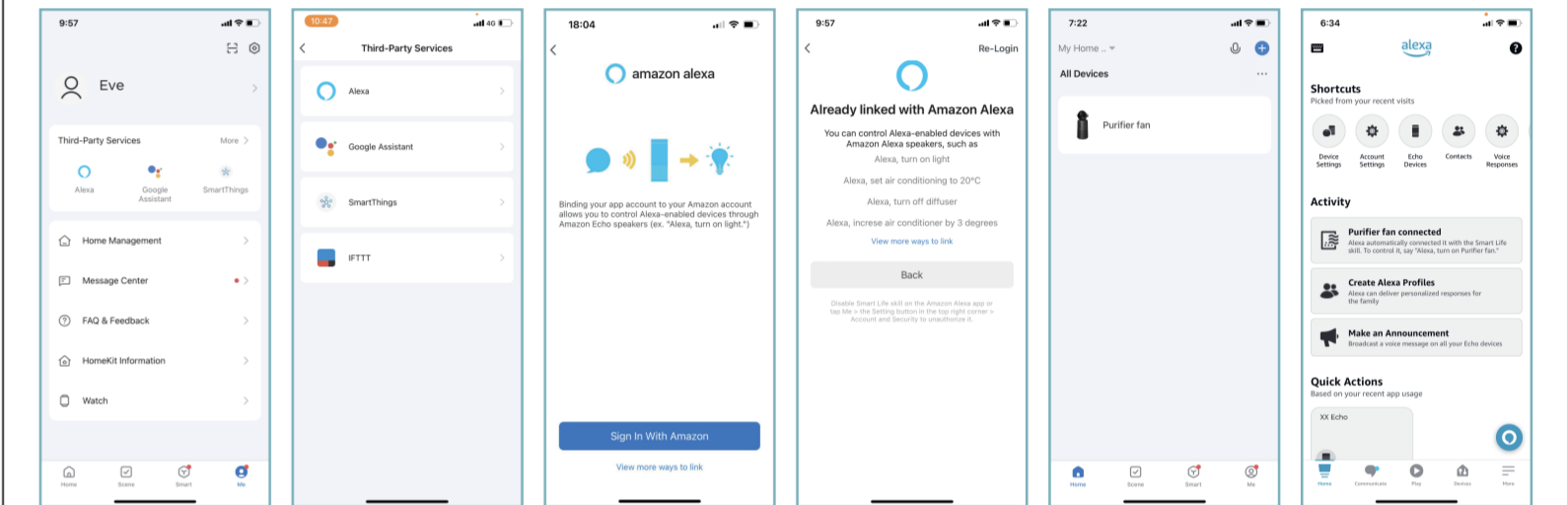
SMART LIFE APP TROUBLE SHOOTING

- My smart air purifier isn't connecting to the Smart Life app.**
1. During the setup process, you must be on a secure 2.4GHz Wi-Fi network. (Please do not use the 5G network, otherwise, the pairing cannot be successful.)
 2. Confirm that the network is working correctly.
 3. Make sure the Wi-Fi password you entered is correct.
- TIPS:**
- ① There should be no spaces at the beginning or end of the password.
 - ② Test the password by connecting a different electronic device to the router.
 - ③ If you're manually typing in the SSID and password, double check that both are entered correctly.
 4. Try moving your air purifier closer to the router. Your phone should be as close as possible to your air purifier.
 5. Your router may need to be at a higher location, away from obstructions.
 6. Make sure your air purifier and router are away from appliances (such as microwave ovens, refrigerators, electronic devices, etc.) to avoid signal interference.
 7. If you're using a VPN, make sure it's turned off while setting up your air purifier.
 8. Disable portal authentication for your Wi-Fi network.
- If portal authentication is enabled, the air purifier will not be able to access your Wi-Fi network, and setup will fail.
- My air purifier is offline.**
1. Make sure the air purifier is plugged in and has power, then refresh the Smart Life menu by swiping down on the screen.
 2. Make sure your router is connected to the internet and your phone's network connection is working.
 3. Delete the offline air purifier from the Smart Life app. Long press and click "Delete/Reconfigure" the air purifier with the Smart Life app.
- NOTE:**
Power outages, internet outages, or changing Wi-Fi routers will cause the air purifier to go offline.

4

SMART VOICE APP CONNECTION QUICK START

- Step 1: Enter the Smart Life APP and click "ME" in the lower right corner.
- Step 2: Click on third-party services and select your existing speaker product. Note: This product only supports Google Assistant and Alexa.
- Step 3: Register or log in to the corresponding account according to the requirements, you can pair and connect.
- Step 4: After connecting successfully, open the Alexa app (Google Assistant app) to check the connection information. After connecting Smart Life to Alexa, please note that Alexa can only control the appliances that are already connected to Smart Life. Make sure to rename the connected products in Smart Life with names that are easy for you to call out. The default name is "Purifier fan".



SMART VOICE APP CONNECTION TROUBLE SHOOTING

Problem	Solution
Why can't I find the purifier fan in Alexa?	You cannot find the purifier fan device in Alexa. You need to connect it with the smart voice app (Alexa/Google Assistant) within the "My" section of the Smart Life app. Please ensure that all devices are connected to the same network and avoid using a 5G network for the connection.
I have successfully connected the Smart Life app with the smart voice app (Alexa/Google Assistant), but I can not use the voice assistant to control the machine.	Please check if the purifier fan device has successfully connected to the Smart Life app. Verify if the name of the connected device matches the name you are using to call it. By default, it may be named "Purifier fan". If they don't match, you can change the name to any convenient name for you to use with the Smart Life app.
After disconnecting the power, I can no longer use the voice assistant to control the machine.	If you experience a loss of connection after disconnecting the power, we recommend reconnecting the device.
After renaming it, I am unable to use voice commands to call the machine.	Check if the naming of the device is consistent with the name you are using to call it. If they are consistent, try renaming it with a different name. Note: Avoid using abbreviations of proprietary names for naming the device.
All connections are correct, but the machine doesn't respond when you give the voice command.	Please check if the voice command you are using matches the commands listed on the instruction card.

5

Alexa

Feature	Functional Instruction	Instruction 1	Instruction 2	Instruction 3	Instruction 4
Switching function	Switching instruction	Alexa, turn on "Purifier fan" Alexa, turn off "Purifier fan"			
Child lock function	Child lock order	Alexa, turn on child lock Alexa, turn off child lock	Alexa, turn on child lock on "Purifier fan" Alexa, turn off child lock on "Purifier fan"	Alexa, turn on lock Alexa, turn off lock	Alexa, turn on lock on "Purifier fan" Alexa, turn off lock on "Purifier fan"
	Energy saving directive	Alexa, set the setting to Ecological	Alexa, set the mode on the "Purifier fan" to Ecological	Alexa, set the pattern to Environmentally Friendly	Alexa, set the mode on the "Purifier fan" to Environmentally Friendly
Mode function	Automatic instruction	Alexa, set the mode to AUTO mode	Alexa, set the mode on the "Purifier fan" to AUTO mode	Alexa, set the setting to AUTO	Alexa, set the mode on the "Purifier fan" to AUTO
	Purifier fan command	Alexa, set the mode to Purifier fan mode	Alexa, set the mode on the "Purifier fan" to Purifier fan mode	Alexa, set the setting to Purifier fan	Alexa, set the mode on the "Purifier fan" to Purifier fan mode
Fan instruction	Purifier instruction	Alexa, set the mode to purifier mode	Alexa, set the mode on the "Purifier fan" to purifier	Alexa, set the setting to Purifier	Alexa, set the mode on the "Purifier fan" to purifier mode
	Fan instruction	Alexa, set the mode to FAN mode	Alexa, set the mode on the "Purifier fan" to FAN mode	Alexa, set the setting to FAN	Alexa, set the setting on the "Purifier fan" to FAN
Wind speed regulating function	High speed order	Alexa, set the wind speed to high	Alexa, set the wind speed on the "Purifier fan" to high	Alexa, set the wind speed to high speed	Alexa, set the wind speed on the "Purifier fan" to high speed
	Sleep wind speed command	Alexa, set the wind speed to sleep	Alexa, set the wind speed on the "Purifier fan" to sleep	Alexa, set the wind speed to lowest speed	Alexa, set the wind speed on the "Purifier fan" to lowest speed
Wind speed regulating function	Strong wind speed order	Alexa, set the wind speed to strong wind	Alexa, set the wind speed on the "Purifier fan" to turbo	Alexa, set the wind speed to strong wind	Alexa, set the wind speed on the "Purifier fan" to strong wind
	Low wind speed command	Alexa, set the wind speed to low	Alexa, set the wind speed on the "Purifier fan" to low	Alexa, set the wind speed to low speed	Alexa, set the wind speed on the "Purifier fan" to low speed
Ambient light function	Ambient light command	Alexa, turn on light Alexa, turn off light	Alexa, turn on light on "Purifier fan" Alexa, turn off light on "Purifier fan"	Alexa, turn on yellow light Alexa, turn off yellow light	Alexa, turn on yellow light on "Purifier fan" Alexa, turn off yellow light on "Purifier fan"
	Enable shake head instruction	Alexa, set the oscillate to swing	Alexa, set the oscillate on the "Purifier fan" to swing	Alexa, set the swing to swing	Alexa, set the swing on the "Purifier fan" to swing
Shaking head function	Enable the up and down shake command	Alexa, set the oscillate Swing up and down	Alexa, set the oscillate on the "Purifier fan" to Swing up and down	Alexa, set the oscillate up and down swing	Alexa, set the oscillate up and down swing on the "Purifier fan" to Swing up and down
	Enable the left and right shake head command	Alexa, set the oscillate swing left to right	Alexa, set the oscillate on the "Purifier fan" to swing left to right	Alexa, set the swing to left and right swing	Alexa, set the oscillate on the "Purifier fan" to left and right swing
Shaking head function	Turn off shake head instruction	Alexa, set the oscillate stop swinging	Alexa, set the oscillate on the "Purifier fan" to stop swinging	Alexa, set the swing to stop oscillating	Alexa, set the oscillate on the "Purifier fan" to stop oscillating

6

Google Assistant

Feature	Functional Instruction	Instruction 1	Instruction 2	Instruction 3
Switching function	Switching instruction	OK Google, turn on "Purifier fan" OK Google, turn off "Purifier fan"		
Child lock function	Child lock order	OK Google, turn on child lock OK Google, turn off child lock	OK Google, turn on child lock on "Purifier fan" OK Google, turn off child lock on "Purifier fan"	OK Google, turn on lock OK Google, turn off lock
	Energy saving directive	OK Google, set the "Purifier fan" to Ecological	OK Google, set the "Purifier fan" to Environmentally Friendly	OK Google, set the "Purifier fan" to Green
Mode function	Automatic instruction	OK Google, set the "Purifier fan" to auto	OK Google, set the "Purifier fan" to auto mode	OK Google, set the "Purifier fan" to automatic
	Purifier fan command	OK Google, set the "Purifier fan" to purifier fan	OK Google, set the "Purifier fan" to purifier fan mode	OK Google, set the "Purifier fan" to fan purifier
Fan instruction	Purifier instruction	OK Google, set the "Purifier fan" to purifier	OK Google, set the "Purifier fan" to purifier mode	OK Google, set the "Purifier fan" to purify
	Fan instruction	OK Google, set the "Purifier fan" to fan	OK Google, set the "Purifier fan" to fan mode	OK Google, set the "Purifier fan" to fan only
Wind speed regulating function	High speed order	OK Google, set the "Purifier fan" to high	OK Google, set the "Purifier fan" to high speed	OK Google, set the "Purifier fan" to high wind speed
	Sleep wind speed command	OK Google, set the "Purifier fan" to sleep	OK Google, set the "Purifier fan" to lowest speed	OK Google, set the "Purifier fan" to lowest speed
Wind speed regulating function	Strong wind speed order	OK Google, set the "Purifier fan" to turbo	OK Google, set the "Purifier fan" to turbo mode	OK Google, set the "Purifier fan" to turbo wind
	Low wind speed command	OK Google, set the "Purifier fan" to low	OK Google, set the "Purifier fan" to low speed	OK Google, set the "Purifier fan" to low wind speed
Ambient light function	Ambient light command	OK Google, turn on light OK Google, turn off light	OK Google, turn on light on "Purifier fan" OK Google, turn off light on "Purifier fan"	OK Google, turn on yellow light OK Google, turn off yellow light
	Enable shake head instruction	OK Google, set the "Purifier fan" to swing	OK Google, set the "Purifier fan" to swing left and right up and down	OK Google, set the "Purifier fan" to swing up and down left and right
Shaking head function	Enable the up and down shake command	OK Google, set the "Purifier fan" to Swing up and down	OK Google, set the "Purifier fan" to up and down swing	OK Google, set the "Purifier fan" to up and down oscillation
	Enable the left and right shake head command	OK Google, set the "Purifier fan" to swing left to right	OK Google, set the "Purifier fan" to left and right swing	OK Google, set the "Purifier fan" to left and right oscillation
Shaking head function	Turn off shake head instruction	OK Google, set the "Purifier fan" to stop swinging	OK Google, set the "Purifier fan" to stop oscillating	OK Google, set the "Purifier fan" to stop moving

7

CONTROL AND DISPLAY

Speed Button

- Sleep wind speed indicator
- Low wind speed indicator
- High wind speed indicator
- Turbo wind speed indicator (App wake-up only)

Mode&WiFi Button

- Manual gear: Fan mode indicator
- Manual gear: Air purifier indicator
- Manual gear: Purifying fan indicator light
- Automatic gear: Auto mode indicator
- Automatic gear: Eco mode indicator
- Wi-Fi indicator (Press for 3s to turn on)

OSC Button

- Left-right oscillation indicator
- Up-down oscillation indicator
- 3D oscillation indicator

Light/Lock Button

- Atmosphere indicator light
- Child lock indicator (Press for 3s to turn on)

Filter Button

The remaining life of the filter is displayed.

HEPA

If the indicator light starts blinking, it means that the filter needs to be replaced. After replacing the filter, press and hold the button for 3 seconds to reset.

PM10

The quantity of PM10 particles can be queried

PM2.5

The quantity of PM2.5 particles can be queried

PM1.0

The quantity of PM1.0 particles can be queried

Air Info Button

Air quality display light

Air quality can be displayed in real time, and four colors represent four states.

NOTE:

1. Install the filter as required, and connect it to the power supply
2. When the product is powered on for the first time, the PM2.5 sensor in the machine will wake up, and the corresponding display light will also turn on synchronously. After the preheating is completed, the prompt sound of 'drip' will be heard before the machine can be operated
3. For detailed explanations of the modes and functions, please refer to the instruction manual.